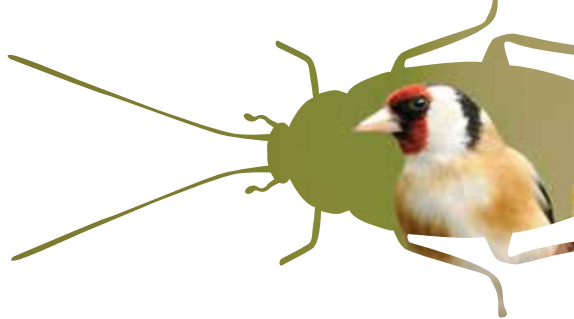




# wild springfestival

Dumfries and Galloway

5 April - 5 May 2014



## Introduction

Welcome to Scotland's most friendly family wildlife festival. **Dumfries & Galloway's 2014 Wild Spring Festival** runs from the **5th April to 5th May** and features over **100 events** many free and most hosted by local wildlife guides. Set amidst beautiful unspoilt countryside, our festival is perfect for families and wildlife fans alike to discover and stay in the most surprising and naturally inspiring part of Scotland.

In recognition of **Scotland's 2014 Homecoming** theme, this year's festival will celebrate wildlife coming home to Dumfries & Galloway for the summer. From the giant, but harmless, Basking Sharks of the Solway, to the warblers and flycatchers of our ancient oak woods, the beautiful butterflies that travel hundreds of miles for our flowers, and the majestic Peregrine Falcon returning to nest on our precipitous cliffs.

From Red Deer to Red Kites and Otters to Oystercatchers and from Badgers to Black Grouse, Barnacle Geese, Bats and the charismatic Red Squirrel, Dumfries and Galloway is teeming with wildlife this Spring and throughout the year, find out more about our festival and all things wildlife on [www.wildseasons.co.uk](http://www.wildseasons.co.uk)

On behalf of the 2014 Wild Spring Festival, I extend to you a very warm welcome to the most naturally inspiring area of Scotland.

**Peter Norman**  
Biodiversity Officer



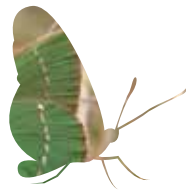
### A naturally inspiring break

Dumfries & Galloway offers a range of quality hotel, B&B and self-catering accommodation that is second to none. Whether you plan an overnight stay, a long weekend break or an extended holiday during the school holidays, our local accommodation providers have great value deals and packages to coincide with the 2014 Wild Spring Festival.

You can also go search and book accommodation in Dumfries & Galloway right now at [www.visitsouthwestscotland.com](http://www.visitsouthwestscotland.com)

### Naturally inspiring things to do

If you're visiting Dumfries & Galloway for our Wild Spring Festival, you'll be surprised at the variety of things to do locally. There's foodie heaven at weekly farmers' market, world renowned 7stanes mountain bike trails, castles, gardens and golf galore. As Scotland Welcomes the World in 2014, Dumfries & Galloway extends a very warm welcome and some outstanding wildlife and landscape. Find out about the variety of things to do at [www.visitdumfriesandgalloway.co.uk/see-do/](http://www.visitdumfriesandgalloway.co.uk/see-do/)



# Wildlife Events

## 5 April - 5 May 2014

For more events and any changes please check [www.wildseasons.co.uk](http://www.wildseasons.co.uk)

### Weeds, Bees and Butterflies

**Daily Saturday 15/03/14 until Saturday 31/05/14, 10:00-17:00**

The Studio @ Logan Botanic Garden, DG9 9ND, NX095424

The Muddy Feet exhibition explores weeds, bees and butterflies in science, art and wellbeing over the ages in Galloway and Scotland.

Contact: Richard Baines 01776 860231

[www.rbge.org.uk/logan](http://www.rbge.org.uk/logan)

Booking not essential. Suitable for all ages  
Adult £6, Concession £5, Child free

### Strandline exhibition

**Daily Monday 31/03/14 until Sunday 11/05/14, 10:00 – 17:00**

Mill on the Fleet, Gatehouse of Fleet, NX599562  
Twice a day the tide refills the strandline and becomes a beachcomber's delight. Find out what is cast up on the Solway shore.

Contact: Mill on the Fleet exhibition 01557 814099

Booking not required. Suitable for all ages

### Stars and Stripes Badger Watching

**Nightly Monday 31/03/14 until Sunday 13/04/14, 20:00**

WWT Caerlaverock, DG1 4RS, NY052657

Watch wild badgers feeding just outside our observatory. A unique opportunity to watch badgers in comfort whatever the weather.

Contact: 01387 770200

[info.caerlaverock@wwt.org.uk](mailto:info.caerlaverock@wwt.org.uk)

[www.wwt.org.uk](http://www.wwt.org.uk)

Booking essential. Suitable for ages 7+  
Cost Adults £7.50, Conc £5.00 and Children £2.50  
Refreshments included



### The Wild Goose Chase Geocaching Challenge

**Friday 04/04/14 until Saturday 31/05/14, 10:00-22:00**

All the best goose places across Dumfries & Galloway. NX440548

Are you ready for a challenge? A Wild Goose Chase geocaching trail across some of the best goose places in Dumfries and Galloway.

Contact: D&G Council Rangers, 07702 212728

[elizabeth.tindal@dumgal.gov.uk](mailto:elizabeth.tindal@dumgal.gov.uk)

Booking not essential. Suitable for all ages  
Charges at some venues

### Wilderness Canoe Trip

**Daily Saturday 05/04/14 until Monday 05/05/14, 11:30-13:00 or 14:00-15:30**

Galloway Activity Centre, Loch Ken, DG7 3NQ, NX657736

Look out for migrant geese and whooper swans, as well as goldeneye, pintail, goosander and tufted duck. You will see red kites, possibly red deer and red squirrel. Otters have been seen early in the morning. Contact: Richard or Kieran 01644 420626

[www.lochken.co.uk](http://www.lochken.co.uk)

Booking essential. Suitable for ages 8+  
£16.50pp 1.5hr trip

### Wilderness Mountain Bike Ride

**Daily Saturday 05/04/14 until Monday 05/05/14, 11:30-13:00 or 14:00-15:30**

Galloway Activity Centre, Loch Ken, DG7 3NQ, NX657736

Woodlands are great for red kites, pied flycatchers, great-spotted woodpeckers, nuthatches, wood warblers and willow tits. Look out for red squirrels and ghostly-white barn owls can be found in good numbers.

Contact: Richard or Kieran 01644 420626

[www.lochken.co.uk](http://www.lochken.co.uk)

Booking essential.  
Suitable for ages 8+  
£16.50pp 1.5hr ride  
(includes ferry across Loch Ken)



## Guides in the Hides

**Daily Saturday 05/04/14 until Monday 05/05/14, 11:00-15:00**

WWT Caerlaverock, DG1 4RS, NY052657

An expert will be in the Sir Peter Scott Observatory and around the hides and towers to point out the different birds on the reserve.

Contact: 01387 770200

[info.caerlaverock@wwt.org.uk](mailto:info.caerlaverock@wwt.org.uk)

[www.wwt.org.uk](http://www.wwt.org.uk)

Booking not essential. Suitable for all ages  
Normal admission prices, WWT members free.

## Forest Fun for Dads and Kids

**Saturday 05/04/14, 10:30-12:30**

The Café, Kirroughtree Visitor Centre, Stronord, Newton Stewart, DG8 7BE, NX452646

Try your hand at wildlife photography. Bring a camera or camera phone with you.

Contact: 01671 402165

[lizzie@creamogalloway.co.uk](mailto:lizzie@creamogalloway.co.uk)

[www.creamogalloway.co.uk/kirroughtree](http://www.creamogalloway.co.uk/kirroughtree)

Booking essential. Suitable for ages 5+  
Cost: £5

## Wild Rocks

**Every Sunday from 06/04/14 to end of April 10.30 and 15.30**

Gem Rock Museum, Chain Road, Creetown, Newton Stewart DG8 7HJ

Illustrated talk by Tim Stephenson about relationship between geology and wildlife

Contact: 01671 820554

[enquiries@gemrock.net](mailto:enquiries@gemrock.net)

[www.gemrock.net](http://www.gemrock.net)

Cost: Normal admission fee, 20% discount for pre-booking through [wildseasons.co.uk](http://wildseasons.co.uk)

## Explore a wild shore

**Sunday 06/04/14, 10:00-12:00**

Powillimount car park, DG2 8BG, NX989564

Go on a Coastal Ranger led walk to discover seashells, rocks and fossils.

Contact: Nic Coombey, Solway Firth Partnership  
01387 251991

[www.solwayfirthpartnership.co.uk](http://www.solwayfirthpartnership.co.uk)

Booking essential. Suitable for all ages

[www.wildseasons.co.uk](http://www.wildseasons.co.uk)



## Birding for Beginners

**Sunday 06/04/14, 13.00 to 16.00**

WWT Caerlaverock, DG1 4RS, NY052657

Learn hints and tips from experts to get the most of your bird watching. Bring binoculars if you have them, notebook and pencil.

Contact: 01387 770200

[info.caerlaverock@wwt.org.uk](mailto:info.caerlaverock@wwt.org.uk)

[www.wwt.org.uk](http://www.wwt.org.uk)

Booking essential. Suitable for all ages  
Cost: Normal admission rates, WWT members free

## Watching the moorland skies

**Sunday 06/04/14, 09:00-13:00**

Langholm Moor, DG13, NY3986

Join us to watch incredible bird life. We'll be keeping our eyes open for the wonder that is the skydancing display of Hen Harriers as well Merlin, Short Eared Owl, Raven, Buzzard, Skylark and many more. Wrap up warm, it can be cold on the moor. Sorry no toilets.

Contact: Cat Barlow 01387 380914

[cat@langholminitiative.co.uk](mailto:cat@langholminitiative.co.uk)

[www.langholm Moorland.co.uk](http://www.langholm Moorland.co.uk)

Booking not essential. Suitable for all ages

## Bug & Mini Beast Adventures

**Sunday 06/04/14, 11:00-12:30 or 14.00 – 15.30**

Castle Kennedy Garden, Stranraer DG9 8BG,

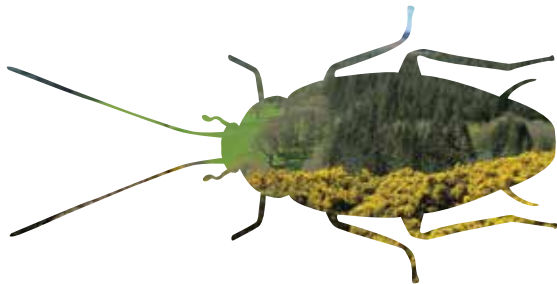
Join our ranger for this month's Bug and Mini Beast Adventures.

Contact: [info@castlekennedygardens.co.uk](mailto:info@castlekennedygardens.co.uk)

01581 4002255

Suitable for all ages

Cost: Included with admission to Gardens



### Red Deer in Spring

**Monday 07/04/14, 10:30-11:30**

Galloway Forest Park Red Deer Range, DG7 3SQ, NX521731

Catch up with our Forest Park Rangers and discover more about these amazing animals.

Contact: Galloway Forest Park team on 01671 402420

[www.forestry.gov.uk/gallowayforestpark](http://www.forestry.gov.uk/gallowayforestpark)

Booking essential. Suitable for all ages

### Wildlife Orienteering

**Monday 07/04/14, 13:00-16:00**

Eskrigg Reserve, Lockerbie, DG11 1HY, NY126805

15 minute walk from Dryfesdale Cemetery Car Park.

Introduction to orienteering at levels 1, 2 & 3 with Jim Rae.

Contact: Jim Rae, mobile: 07739 987009

[www.lockerbie-wildlife-trust.co.uk](http://www.lockerbie-wildlife-trust.co.uk)

Booking essential. Suitable for ages 12+

Donations to Lockerbie Wildlife Trust welcome.

### Campfires Cooking and Wild Food

**Tuesday 08/04/14, 10:30-12:30**

Dumfries Museum, DG2 7SW, NX970757

Light a campfire, go foraging for wild food and then cook over the fire. All children must be accompanied by a responsible adult.

Contact: Dumfries Museum 01387 253374

Booking essential. Suitable for ages 5 -16

### Red Deer in Spring

**Tuesday 08/04/14, 10:30-11:30**

Galloway Forest Park Red Deer Range

See 07/04/14 for details.

### Machinery and Mud

**Tuesday 08/04/14, 11:00-13:00**

RSPB Mersehead, Southwick, Dumfries, DG2 8AH, NX925561

See how we farm the land and meet what lurks in the mud!

Contact: 01387 780579

[mersehead@rspb.org.uk](mailto:mersehead@rspb.org.uk)

[www.rspb.org.uk/mersehead](http://www.rspb.org.uk/mersehead)

Booking essential. Suitable for ages 7+

Adult £4, Child £2, RSPB member half price

### Explore a wild shore

**Tuesday 08/04/14, 12:00-14:00**

Garlieston Bay, North Crescent, Garlieston NX477467

Go on a Coastal Ranger led walk to discover seashells and rocky shore wildlife.

Contact: Nic Coombey, Solway Firth Partnership 01387 251991

[www.solwayfirthpartnership.co.uk](http://www.solwayfirthpartnership.co.uk)

Booking essential. Suitable for all ages





## Mull of Galloway Guided Walk

**Tuesday 08/04/14, 13:00-15:00**

RSPB Mull of Galloway, Drummore, DG9 9HP, NX155304

Join us for a walk around a stunning location for seabirds in spring. Bring binoculars if you have them, suitable clothing and stout footwear.

Contact: 01776 840539 (April - October) or 01988 402130 (all year)

[www.rspb.org.uk/mullofgalloway](http://www.rspb.org.uk/mullofgalloway)

Booking not essential. Suitable for ages 4+  
Adult £3, RSPB Member £1.50, child free

## April at Aldouran

**Wednesday 09/04/14, 10:00-16:00**

Aldouran Wetland Garden, Leswalt, DG9 0LJ, NX010635

Walk around the Wetland Garden and adjacent Aldouran Glen. Enjoy pond dipping, a bird treasure hunt, woodland art and nature craft sessions.

Guides will be on hand.

Contact: Jane Sloan 01776 870648 / 07919 798399

[j.sloan648@btinternet.com](mailto:j.sloan648@btinternet.com)

or visit our facebook page.

[www.leswaltwetlandgarden.org.uk](http://www.leswaltwetlandgarden.org.uk)

Booking not essential. Suitable for all ages  
Donations welcome

## Red Deer in Spring

**Wednesday 09/04/14, 10:30-11:30**

Galloway Forest Park Red Deer Range  
See 07/04/14 for details.

## Castle Kennedy Gardens Champion Tree Walk

**Wednesday 09/04/14, 14.00 – 15.30**

Castle Kennedy Garden, Stranraer DG9 8BG

Join our Head Gardener to learn more about 21 majestic Champion Trees and why they are so special. Contact: 01581 4002255

[info@castlekennedygardens.co.uk](mailto:info@castlekennedygardens.co.uk)

Suitable for all ages

Cost: Included with admission to Gardens plus £2.00 which include cake and hot drink

## Wild Wednesday

**Wednesday 09/04/14, 11:00-16:00**

RSPB Mersehead, Southwick, Dumfries, DG2 8AH, NX925561

Fun activities looking at the wildlife around the reserve. Look for the smallest animal to the noisiest bird and discover how you can help wildlife in your garden.

Contact: 01387 780579

[mersehead@rspb.org.uk](mailto:mersehead@rspb.org.uk)

[www.rspb.org.uk/mersehead](http://www.rspb.org.uk/mersehead)

Booking essential. Suitable for all ages  
Adult £4, Child £2, RSPB member half price

## Insights into Wildlife at Wigtown

**Wednesday 09/04/14, 13:00-15:00**

Harbour Hide, Wigtown Bay Local Nature Reserve & Castle Field Wetland

Contact: Dumfries and Galloway Council's Rangers,

[elizabethindal@dumgal.gov.uk](mailto:elizabethindal@dumgal.gov.uk),

07702212728

This is a great opportunity to meet an expert in spotting and talking about wildlife in Dumfries and Galloway meet your guide at Wigtown Harbour Hide. As well as your guide to chat to you, there will be binoculars, telescopes and books to help you see and identify the birds and other wildlife of Wigtown Bay. In severe weather or extreme high tides this event may be cancelled

## Working with Wood

**Wednesday 09/04/14, 14:00-16:00**

Eskrigg Reserve, Lockerbie, DG11 1HY, NY126805  
Lockerbie Wildlife Trust in partnership with D&G Ranger Service. Practical session with Tom Henry working with wood and cutting tools.

Contact: Jim Rae, mobile: 07739 987009

[www.lockerbie-wildlife-trust.co.uk](http://www.lockerbie-wildlife-trust.co.uk)

Booking essential. Suitable for ages 8+  
Donations to Lockerbie Wildlife Trust welcome.

## Campfires Cooking and Wild Food

**Thursday 10/04/14, 11:00-13:00**

Annan Museum, DG12 6AA, NY193665

Light a campfire, go foraging for wild food and then cook over the fire. All children must be accompanied by a responsible adult.

Contact: Annan Museum 01461 201384

Booking essential. Suitable for ages 5-16



## Introduction to Geocaching

**Thursday 10/04/14, 11:00-12:30**

Blairmount Park/Doonhill Wood, Newton Stewart, DG8 6NU, NX402654

How good are you at finding things? You will have to bring a smart phone, work out the clues and have sharp eyes to find them. For more about geocaching see [www.geocaching.com](http://www.geocaching.com)  
All children must be accompanied by a responsible adult. Contact: D&G Council Rangers [elizabeth.tindal@dumgal.gov.uk](mailto:elizabeth.tindal@dumgal.gov.uk)  
07702 212728

Booking not essential. Suitable for all ages

## Wild Rocks

**Every Thursday from 10/04/14 to end of April 10.30 and 15.30**

Gem Rock Museum, Chain Road, Creetown, Newton Stewart DG8 7HJ

Illustrated talk by Tim Stephenson about relationship between geology and wildlife  
Contact: 01671 820554 [enquiries@gemrock.net](mailto:enquiries@gemrock.net)  
[www.gemrock.net](http://www.gemrock.net)

Cost: Normal admission fee, 20% discount for pre-booking through [wildseasons.co.uk](http://wildseasons.co.uk)

## Mull of Galloway Guided Walk

**Thursday 10/04/14, 13:00-15:00**

RSPB Mull of Galloway, Drummore  
See 08/04/14 for details.

## Explore a wild shore

**Thursday 10/04/14, 14:00-16:00**

Back Bay Car Park (past St Medans Golf Course), Monreith NX365395

Go on a Coastal Ranger led walk to discover seashells, rocks and rockpool creatures.  
Contact: Nic Coombey, Solway Firth Partnership  
01387 251991

[www.solwayfirthpartnership.co.uk](http://www.solwayfirthpartnership.co.uk)

Booking essential. Suitable for all ages

## Make a wind Chime

**Thursday 10/04/14, drop-in anytime 14:00-15:30**

Logan Botanic Garden, DG9, NX095424  
Create your own wind chime using the shells from locally caught scallops to hang in the garden or window. Contact: Richard Baines 01776 860231  
[www.rbge.org.uk/logan](http://www.rbge.org.uk/logan)

Booking not essential. Suitable for ages 3+  
Adult £6, Concession £5, Child free

## Water Wonders

**Thursday 10/04/14, 14:00-16:00**

Eskrigg Reserve, Lockerbie, DG11 1HY, NY126805  
Pond dipping with Jim Rae. Catch and identify small pond animals. Learn how they are adapted to spend at least part of their lives under water.  
Contact: Jim Rae, mobile: 07739 987009  
[www.lockerbie-wildlife-trust.co.uk](http://www.lockerbie-wildlife-trust.co.uk)  
Booking essential. Suitable for ages 5+  
Donations to Lockerbie Wildlife Trust welcome.

## Galloway Forest Festival

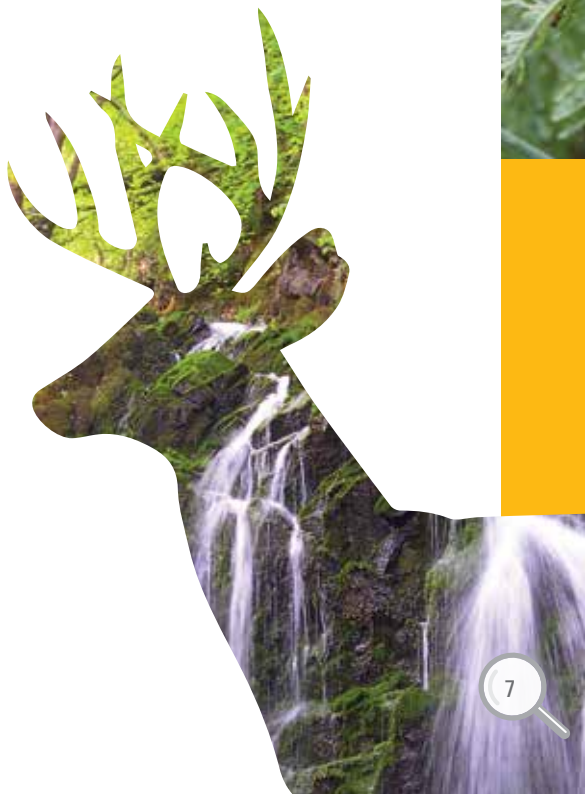
**Friday 11/04/14 until Monday 14/04/14, 10:00-16:00**

Various locations across Galloway Forest Park, DG8 7BE

Join us for this fun packed weekend to celebrate our fabulous new and improved visitor centres in the Galloway Forest Park.

Contact: Galloway Forest Park team on 01671 402 420  
[www.forestry.gov.uk/gallowayforestpark](http://www.forestry.gov.uk/gallowayforestpark)  
Booking not essential. Suitable for all ages

[www.wildseasons.co.uk](http://www.wildseasons.co.uk)





### Loch Ken from the Water

**Friday 11/04/14, 10:00-13:00**

Loch Ken Marina, 1 mile north of Parton, NX679716  
A trip on Loch Ken, covering its hydro scheme and boating with possible wildlife sightings. See the landscape from a different perspective.

Contact: Andrew Blunsum 07730 427611

[andrew.blunsum@dumgal.gov.uk](mailto:andrew.blunsum@dumgal.gov.uk)

Booking essential. 4 persons only per trip.

Suitable for ages 14+

### Wild Spring Storytime

**Friday 11/04/14, 10:30-11.15**

The Café, Kirroughtree Visitor Centre, Stronord, Newton Stewart, DG8 7BE, NX452646

Wildlife stories, singing and rhymes

Contact: 01671 402165

[lizzie@creamogalloway.co.uk](mailto:lizzie@creamogalloway.co.uk)

[www.creamogalloway.co.uk/kirroughtree](http://www.creamogalloway.co.uk/kirroughtree)

Booking essential. Suitable for ages 3+

### Fish Up Close

**Friday 11/04/14, 11:00-12:30**

Torhouse Trout Farm, Wigtown, DG8 9DJ, NX399554

A guided tour of a hatchery, with close up views of the early life stages of wild salmon. Lamprey, perch, pike and roach may also be on show. Following on, a tour of Torhouse (rainbow) Trout Farm.

Contact: Galloway Fisheries Trust Tel: 01671 403011,

[mail@gallowayfisheriestrust.org](mailto:mail@gallowayfisheriestrust.org)

[www.gallowayfisheriestrust.org](http://www.gallowayfisheriestrust.org)

Booking essential. Suitable for all ages

Voluntary donation gratefully received

### Barclye Past and Present

**Friday 11/04/14, 11:00-13:00**

RSPB Wood of Cree (Barclye Car Park), Newton Stewart, DG8 6SN, NX386694

A historical walk of Barclye nature reserve. Bronze age to the industrial revolution in two hours!

Contact: 01988 402130

[crystal.maw@rspb.org.uk](mailto:crystal.maw@rspb.org.uk)

[www.rspb.org.uk/woodofcree](http://www.rspb.org.uk/woodofcree)

Booking not essential. Suitable for ages 5+

Adult £4, child £2. Family (2adult 2children) £10.

RSPB member half price.

### Family Fun Friday

**Friday 11/04/14, 11:00-16:00**

RSPB Mersehead, Southwick, Dumfries, DG2 8AH, NX925561

Have fun with nature and find out how you can help it. Get active, with loads of fun for the family.

Contact: 01387 780579

[mersehead@rspb.org.uk](mailto:mersehead@rspb.org.uk)

[www.rspb.org.uk/mersehead](http://www.rspb.org.uk/mersehead)

Booking not essential. Suitable for all ages

Adult £4, Child £2. RSPB member half price

### Wee Woodland Beasties

**Friday 11/04/14, 14:00-16:00**

Eskrigg Reserve, Lockerbie, DG11 1HY, NY126805

Hunt and identify the mini-beasts in the woodland and then learn about their way of life with Jim Rae.

Contact: Jim Rae, mobile: 07739 987009

[www.lockerbie-wildlife-trust.co.uk](http://www.lockerbie-wildlife-trust.co.uk)

Booking essential. Suitable for ages 5+



## Pond Dipping

**Friday 11/04/14, 11:00-12:30, 14.00 – 15.30**

Castle Kennedy Garden, Stranraer DG9 8BG

Join our ranger and discover weird and wonderful creatures in and around Round Pond.

Contact: 01581 4002255

[info@castlekennedygardens.co.uk](mailto:info@castlekennedygardens.co.uk)

Suitable for all ages

Cost: Included with admission to Gardens

## Bug & Mini Beast Adventures

**Sunday 13/04/14, 11:00-12:30, 14.00 – 15.30**

Castle Kennedy Garden, Stranraer DG9 8BG

Join our ranger for this month's Bug and Mini Beast Adventures.

Contact: 01581 4002255

[info@castlekennedygardens.co.uk](mailto:info@castlekennedygardens.co.uk)

Suitable for all ages

Cost: Included with admission to Gardens

## Moorland bird ringing demonstration

**Saturday 12/04/14, drop-in any time**

**08:00-12:00**

Langholm Moor, DG13 0LL, NY385823

Get close to some moorland bird life. Learn how birds are caught, handled safely and ringed and the kind of information we can learn from them. Call for details of location.

Contact: Cat Barlow 01387 380914

[cat@langholminitiative.co.uk](mailto:cat@langholminitiative.co.uk)

[www.langholm Moorland.co.uk](http://www.langholm Moorland.co.uk)

Booking essential. Suitable for all ages

## Pondemonium

**Saturday 12/04/14, 10:00-16:00**

Wigtown Bay Visitor Centre, County Buildings,

Wigtown, DG8 9JH, NX435553

A close up look at the underwater world! Find out how to create your own watery world at home.

Contact: RSPB 01988 402130

[crookofbaldoon@rspb.org.uk](mailto:crookofbaldoon@rspb.org.uk)

[www.rspb.org.uk/crookofbaldoon](http://www.rspb.org.uk/crookofbaldoon)

Booking not essential. Suitable for all ages

Donations welcome

## Family Forest Foraging and Wild Cook-In

**Saturday 12/04/14, 13:00-16:00**

Gatehouse of Fleet, DG7 2DL, NX605 562

Join expert forager Mark Williams of Galloway Wild Foods for a guided foray through Cally Woods exploring the delicious, healthy and surprising array of edible spring plants and fungi. Enjoy a wild cook-in of our finds in the forest afterwards. For more details visit [GallowayWildFoods.com](http://GallowayWildFoods.com).

Contact: [mark@gallowaywildfoods.com](mailto:mark@gallowaywildfoods.com) or 07900 692 478. 1.5 miles easy walking for all ages.

Places limited - booking essential. Cost: Adults £20 Children £10.

## Explore a wild shore

**Saturday 12/04/14, 14:00-16:00**

Ardwell Village car park NX110455

Go on a Coastal Ranger led walk to discover seashells, seaweeds and seashore creatures.

Contact: Nic Coombey, Solway Firth Partnership 01387 251991

[www.solwayfirthpartnership.co.uk](http://www.solwayfirthpartnership.co.uk)

Booking essential. Suitable for all ages

## Watching the moorland skies

**Sunday 13/04/14, 09:00-13:00**

Langholm Moor

See 06/04/14 for details.

## Spring has Sprung

**Sunday 13/04/14, 11:00-16:00**

Rockcliffe, DG5 4QQ, NX8465538

Join National Trust for Scotland's rangers for a celebration of spring. Find out what our local wildlife is doing at this busy time of year.

Contact: Linda Marshall, National Trust for Scotland 01556 502575

Booking not essential. Suitable for all ages

## Red Deer in Spring

**Monday 14/04/14, 10:30-11:30**

Galloway Forest Park Red Deer Range

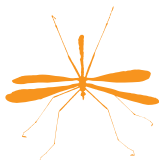
See 07/04/14 for details.

## Water Wonders

**Monday 14/04/14, 14:00-16:00**

Eskrigg Reserve, Lockerbie.

See 10/04/14 for details.



## Balcary Coastal Walk in Spring

**Thursday 17/04/14, 09:30-12:30**

Balcary Coastal Walk, DG71QZ, NX822495  
Join a cliff-top coastal walk with a D&G Council Ranger. History, wildlife and excellent views to the Lakeland Hills...on a clear day.

Contact: Keith Kirk Tel: 07850 157661

Booking essential. Suitable for ages 14+

## Wildlife Photography for Kids

**Tuesday 15/04/14, 10:00-12:00**

Eskrigg Reserve, Lockerbie, DG11 1HY, NY126805  
Advice on the use of compact cameras and mobile phones to photograph wildlife.

Contact: Jim Rae, mobile: 07739 987009

[www.lockerbie-wildlife-trust.co.uk](http://www.lockerbie-wildlife-trust.co.uk)

Booking essential. Suitable for ages 8+  
Donations to Lockerbie Wildlife Trust welcome.

## Woodland Art

**Tuesday 15/04/14, 10:30-11:30**

Dumfries Museum, DG2 7SW, NX970757  
Create some fantastic woodland creations made entirely from what we can find growing naturally around Dumfries. All children must be accompanied by a responsible adult.

Contact: Dumfries Museum 01387 253374

Booking essential. Suitable for ages 5-16

## Red Deer in Spring

**Tuesday 15/04/14, 10:30-11:30**

Galloway Forest Park Red Deer Range  
See 07/04/14 for details.

## Machinery and Mud

**Tuesday 15/04/14, 11:00-13:00**

RSPB Mersehead, Southwick  
See 08/04/14 for details.

## Mull of Galloway Guided Walk

**Tuesday 15/04/14, 13:00-15:00**

RSPB Mull of Galloway, Drummore  
See 08/04/14 for details.

## Red Deer in Spring

**Wednesday 16/04/14, 10:30-11:30**

Galloway Forest Park Red Deer Range  
See 07/04/14 for details.

## Wild Wednesday

**Wednesday 16/04/14, 11:00-16:00**

RSPB Mersehead, Southwick  
See 09/04/14 for details.

## Insights into Wildlife at Wigtown

**Wednesday 16/04/14, 13:00-15:00**

Harbour Hide, Wigtown Bay  
See 09/04/14 for details

## Working with Wood

**Wednesday 16/04/14, 14:00-16:00**

Eskrigg Reserve, Lockerbie, DG11 1HY, NY126805  
Practical session with Tom Henry working with wood and cutting tools.

Contact: Jim Rae, mobile: 07739 987009

[www.lockerbie-wildlife-trust.co.uk](http://www.lockerbie-wildlife-trust.co.uk)

Booking essential. Suitable for ages 8+  
Donations to Lockerbie Wildlife Trust welcome.

## Mocha and Moths

**Thursday 17/04/14, 09:30-11:00**

RSPB Mersehead, Southwick, Dumfries, DG2 8AH, NX925561

Not all moths are dull brown and boring! A morning of moths, over a hot drink. See the variety trapped overnight as we release them.

Contact: 01387 780579

[mersehead@rspb.org.uk](mailto:mersehead@rspb.org.uk)

[www.rspb.org.uk/mersehead](http://www.rspb.org.uk/mersehead)

Booking essential. Suitable for all ages  
Adult £5, Child £2, RSPB member half price

## Red Kites at Parton

**Thursday 17/04/14, 10:30-12:00**

Boat o' Rhone car park, Loch Ken Holiday Park, north of Parton, DG7 3NE, NX685703

A short walk to see and learn about Galloway's red kites. Kids can take part in a Scavenger Hunt.

Contact: 01556 670464

[calum.murray@rspb.org.uk](mailto:calum.murray@rspb.org.uk)

[www.gallowaykitetrail.com](http://www.gallowaykitetrail.com)

Booking not essential. Suitable for all ages  
Adult £3, RSPB member £1.50, child free

## Woodland Art

**Thursday 17/04/14, 11:00-13:00**

Annan Museum, DG12 6AA, NY193665

Create some fantastic woodland creations made entirely from what we can find growing naturally around Annan. All children must be accompanied by a responsible adult.

Contact: Annan Museum 01461 201384

Booking essential.

Suitable for ages 5-16





### Bird Spot and Song ID

**Thursday 17/04/14, 13:00-16:00**

Logan Botanic Garden, DG9 9ND, NX095424  
Come along with your binoculars and join the RSPB on a tour of the garden, spotting birds and learning to identify their songs.

Contact: Richard Baines 01776 860231

[www.rbge.org.uk/logan](http://www.rbge.org.uk/logan)

Booking not essential. Suitable for ages 3+

Adult £6, Concession £5, Child free

### Mull of Galloway Guided Walk

**Thursday 17/04/14, 13:00-15:00**

RSPB Mull of Galloway, Drummore

See 08/04/14 for details.

### Spring Sensations

**Thursday 17/04/14, 14:00-16:00**

Eskrigg Reserve, Lockerbie, DG11 1HY, NY126805

Join Jim Rae on a sensory trail through the Reserve.

Contact: Jim Rae, mobile: 07739 987009

[www.lockerbie-wildlife-trust.co.uk](http://www.lockerbie-wildlife-trust.co.uk)

Booking essential. Suitable for ages 8+

Donations to Lockerbie Wildlife Trust welcome.

### Wildlife Treasure Hunt

**Friday 18/04/14, 10:30-12:30**

Low Camer Wood, DG8 6SP, NX368729

Meet at Newton Stewart main riverside car park (Belted Galloway cafe at NX411655. Car sharing will be organised where possible.

Follow clues along this nature trail and discover what lives in the woodland.

Contact: Linda or Pete on 01671 401423

[enquiries@cvcwt.org.uk](mailto:enquiries@cvcwt.org.uk)

[www.cvcwt.org.uk](http://www.cvcwt.org.uk)

Booking essential. Suitable for all ages

Voluntary donations to CVCWT

### Wild Spring Storytime

**Friday 18/04/14, 10:30-11:15**

The Café, Kirroughtree Visitor Centre, Stronord

See 11/04/14 for details.

### Family Fun Friday

**Friday 18/04/14, 11:00-16:00**

RSPB Mersehead, Southwick, Dumfries

See 11/04/14 for details.

### Good Friday Walk

**Friday 18/04/14, 13:00-15:00**

RSPB Crook of Baldoon, Wigtown

DG8 9AQ NX445530

Catch the tide with the warden for an informative walk through the reserve. Learn how the RSPB is 'Giving Nature A Home'

Contact: Paul Tarling 01988 402130

[crookofbaldoon@rspb.org.uk](mailto:crookofbaldoon@rspb.org.uk)

Booking not essential. Suitable for all ages

Adult £3 RSPB member £1.50, child free

### Family Coastal Foraging and Wild Cook-In

**Saturday 19/04/14, 10:00-13:00**

Rockcliffe, DG5 4QF, NX847 537

Join expert forager Mark Williams of Galloway

Wild Foods. See entry at top of page for details.

### Spring with the Squirrels

**Saturday 19/04/14, 10:00-12:00**

Eskrigg Reserve, Lockerbie, DG11 1HY, NY126805

Join Jim Rae and Keith Kirk to learn about and photograph Red Squirrels.

Contact: Jim Rae, mobile: 07739 987009

[www.lockerbie-wildlife-trust.co.uk](http://www.lockerbie-wildlife-trust.co.uk)

Booking essential. Suitable for ages 12+

Donations welcome.



## Watching the moorland skies

**Sunday 20/04/14 09:00-13:00**

Langholm Moor  
See 06/04/14 for details.

## Easter Egg Eggstravagansa

**Sunday 20/04/14, 10:30-12:30**

Logan Botanic Garden, DG9 9ND, NX095424  
A fun day out on Easter Sunday. A range of activities including face painting, painting your own egg and the magical Easter Egg hunt!  
Contact: Richard Baines 01776 860231  
[www.rbge.org.uk/logan](http://www.rbge.org.uk/logan)

Booking not essential. Suitable for ages 4-14  
Adult £6, Concession £5, Child free

## Easter Eggstravaganza

**Sunday 20/04/14 11:00 -16:00**

RSPB Mersehead Reserve, Southwick DG2 8AH  
NX925561

An Easter egg hunt around the reserve. Find the clues and complete the challenges to find your way to the giant nest where the eggs are hidden.  
RSPB Mersehead Visitor Centre, T: 01387 780579,  
[www.rspb.org/mersehead](http://www.rspb.org/mersehead)  
E: [mersehead@rspb.org.uk](mailto:mersehead@rspb.org.uk)

Suitable for all ages Adults £4 Children £2, RSPB members half price

## Easter at Kirroughtree

**Sunday 20/04/14, 12:00-16:00**

Kirroughtree visitor centre, DG8 7BE, NX452646  
Join us for Easter fun at Kirroughtree visitor centre.  
Contact: Galloway Forest Park team on 01671 402 420  
[www.forestry.gov.uk/gallowayforestpark](http://www.forestry.gov.uk/gallowayforestpark)  
Booking not essential. Suitable for ages 5+

## Red Deer in Spring

**Monday 21/04/14, 10:30-11:30**

Galloway Forest Park Red Deer Range  
See 07/04/14 for details.

## Red Deer in Spring

**Tuesday 22/04/14, 10:30-11:30**

Galloway Forest Park Red Deer Range  
See 07/04/14 for details.

## Mull of Galloway Guided Walk

**Tuesday 22/04/14, 13:00-15:00**

RSPB Mull of Galloway, Drummore  
See 08/04/14 for details.

## Off the Beaten Track

**Wednesday 23/04/14, 09:30-11:00**

RSPB Mersehead, Southwick. Dumfries, DG2 8AH,  
NX925561

Join our guided walk in wilder parts of the reserve, and discover how we create homes for nature.  
Contact: 01387 780579

[mersehead@rspb.org.uk](mailto:mersehead@rspb.org.uk)  
[www.rspb.org.uk/mersehead](http://www.rspb.org.uk/mersehead)

Booking essential. Suitable for all ages  
Adult £4, Child £2, RSPB member half price

## Red Deer in Spring

**Wednesday 23/04/14, 10:30-11:30**

Galloway Forest Park Red Deer Range  
See 07/04/14 for details.

## Insights into Wildlife at Wigtown

**Wednesday 23/04/14, 13:00-15:00**

Harbour Hide, Wigtown Bay  
See 09/04/14 for details

## Spring Blooms Guided walk

**Wednesday 23/04/14, 14:00-15:30**

Castle Kennedy Garden, Stranraer DG9 8BG  
Join our Head Gardener for an informative guided walk of the Gardens.  
Contact: 01581 4002255  
[info@castlekennedygardens.co.uk](mailto:info@castlekennedygardens.co.uk)

Suitable for all ages  
Admission to the gardens plus £2.00 which includes a hot drink and slice of cake.

## Trek to the Secret Cages

**Thursday 24/04/14, 09:45-13:00**

Kite Trail Car Park, Mossdale, Castle Douglas, DG7 2NF, NX660705

Walk to where red kites were first released in Galloway, with a Scavenger Hunt for kids.  
Contact: 01556 670464

[calum.murray@rspb.org.uk](mailto:calum.murray@rspb.org.uk)  
[www.gallowaykitetrail.com](http://www.gallowaykitetrail.com)

Booking essential. Suitable for ages 7+  
Adult £3, RSPB member £1.50, child free

## Mull of Galloway Guided Walk

**Thursday 24/04/14, 13:00-15:00**

RSPB Mull of Galloway, Drummore  
See 08/04/14 for details.



## April Moths

**Thursday 24/04/14, 10:00-12:00**

Eskrigg Reserve, Lockerbie, DG11 1HY, NY126805  
Help Jim Rae identify any moths caught the previous night. Contact: Jim Rae, mobile: 07739 987009  
[www.lockerbie-wildlife-trust.co.uk](http://www.lockerbie-wildlife-trust.co.uk)  
Booking essential. Event is weather dependent.  
Suitable for ages 12+  
Donations to Lockerbie Wildlife Trust welcome.

## Food for Thought – Wild Scotland & Farmed Venison

**Friday 25/04/14, 10:30-13:30**

Cream o' Galloway, Rainton, Gatehouse of Fleet, DG7 2DR. Meet for coffee & scones. Emma Boyes of Millbank Parkland Venison will describe how improving the wildlife habitats on the farm has made a big difference to local biodiversity. A delicious 2 course lunch will feature venison.  
Contact: 01557 815222  
[lizzie@creamogalloway.co.uk](mailto:lizzie@creamogalloway.co.uk)  
[www.creamogalloway.co.uk](http://www.creamogalloway.co.uk)  
Booking essential. Suitable for adults. Cost: £13.50

## Dawn Chorus

**Saturday 26/04/14, 05:30-07:30**

RSPB Crook of Baldoon, Wigtown, DG8 9AQ, NX445530. The dawn chorus at The Crook is a riot of sound. Come and learn to identify these early birds.  
Contact: 01988 402130  
[crookofbaldoon@rspb.org.uk](mailto:crookofbaldoon@rspb.org.uk)  
[www.rspb.org.uk/crookofbaldoon](http://www.rspb.org.uk/crookofbaldoon)  
Booking not essential. Suitable for all ages  
Adult £3, RSPB member £1.50, child free

## Bird Ringing Demonstration

**Saturday 26/04/14, Times to be confirmed see website**

WWT Caerlaverock, DG1 4RS, NY052657  
Watch songbirds being ringed, weighed and measured. Contact: 01387 770200  
[info.caerlaverock@wwt.org.uk](mailto:info.caerlaverock@wwt.org.uk)  
[www.wwt.org.uk](http://www.wwt.org.uk)  
Booking not essential. Suitable for all ages  
Normal admission charges, WWT members free.

## Forest Fun for Dads and Kids

**Saturday 26/04/14, 10:30-12:30**

The Café, Kिरroughtree Visitor Centre, Stronord.  
Burn off some energy having a go at den building and searching for the natural homes for wildlife that live in the Galloway Forest Park.  
See 05/04/14 for details.

## Open Day at Red Kite Feeding Station

**Saturday 26/04/14, 13:30-16:00**

Bellymack Hill Farm, Laurieston, Castle Douglas, DG7 2PJ, NX689652  
See a kite feeding frenzy for free, with fun activities for all the family. Contact: 01556 670464  
[calum.murray@rspb.org.uk](mailto:calum.murray@rspb.org.uk)  
[www.gallowaykitetrail.com](http://www.gallowaykitetrail.com)  
Booking not essential. Suitable for all ages

## Watching the moorland skies

**Sunday 27/04/14 09:00 - 13:00**

Langholm Moor  
See 06/04/14 for details.

## Crook of Baldoon Open Day

**Sunday 27/04/14, 10:00-15:00**

RSPB Crook of Baldoon, Wigtown, DG8 9AQ, NX445530  
Come and see how we are creating a home for nature and working with voluntary groups in the area.  
Contact: 01988 402130  
[crookofbaldoon@rspb.org.uk](mailto:crookofbaldoon@rspb.org.uk)  
[www.rspb.org.uk/crookofbaldoon](http://www.rspb.org.uk/crookofbaldoon)  
Booking not essential. Suitable for all ages  
Donations welcome

## What's that Warbler?

**Sunday 27/04/14, 13:00 to 16:00**

WWT Caerlaverock, DG1 4RS, NY052657  
Join WWT experts to find and identify the newly arrived spring migrants. Learn to identify those difficult warblers by song.  
Contact: 01387 770200  
[info.caerlaverock@wwt.org.uk](mailto:info.caerlaverock@wwt.org.uk)  
[www.wwt.org.uk](http://www.wwt.org.uk)  
Booking essential. Suitable for all ages  
Normal admission charges, WWT members free.

## Red Deer in Spring

**Monday 28/04/14, 10:30-11:30**

Galloway Forest Park Red Deer Range  
See 07/04/14 for details.





## Red Deer in Spring

**Tuesday 29/04/14, 10:30-11:30**

Galloway Forest Red Deer Range  
See 07/04/14 for details.

## Mull of Galloway Guided Walk

**Tuesday 29/04/14, 13:00-15:00**

RSPB Mull of Galloway, Drummore  
See 08/04/14 for details.

## Red Deer in Spring

**Wednesday 30/04/14, 10:30-11:30**

Galloway Forest Park Red Deer Range  
See 07/04/14 for details.

## Insights into Wildlife at Wigtown

**Wednesday 30/04/14, 13:00-15:00**

Harbour Hide, Wigtown Bay  
See 09/04/14 for details

## Cree Valley Chorus

**Thursday 01/05/14, 05:30-07:30**

RSPB Wood of Cree, Newton Stewart, DG8 6SN,  
NX381708

Listen with the warden to a dawn chorus in South  
Scotland's biggest ancient oak woodland.

Contact: 01988 402130

[crystal.maw@rspb.org.uk](mailto:crystal.maw@rspb.org.uk)

[www.rspb.org.uk/woodofcree](http://www.rspb.org.uk/woodofcree)

Booking essential. Suitable for all ages

Adult £4, Child £2. Family (2adult 2children) £10.

RSPB member half price.

## Mocha and Moths

**Thursday 01/05/14, 09:30-11:00**

RSPB Mersehead, Southwick  
See 17/04/14 for details.

## Mull of Galloway Guided Walk

**Thursday 01/05/14, 13:00-15:00**

RSPB Mull of Galloway, Drummore  
See 08/04/14 for details.

## Food for Thought – Red squirrels in Galloway

**Friday 02/05/14, 10:30-13:30**

The Café, Kिरroughtree Visitor Centre, Stronord,  
Newton Stewart, DG8 7BE, NX452646

Meet for tea & scones. Hear from Heinz Traut about  
Red Squirrel Conservation in area. Followed by  
delicious 2 course lunch. Contact: 01557 814 040

[lizzie@creamogalloway.co.uk](mailto:lizzie@creamogalloway.co.uk)

[www.creamogalloway.co.uk/kirroughtree](http://www.creamogalloway.co.uk/kirroughtree)

Booking essential. Suitable for adults. Cost: £13.50

## Wild Spring Storytime

**Friday 02/05/14, 10:30-11.15**

The Café, Kिरroughtree Visitor Centre, Stronord  
See 11/04/14 for details.

## Dawn Chorus

**Saturday 03/05/14, 05:30-07:30**

RSPB Crook of Baldoon, Wigtown

See 26/04/14 for details.

## Guided Walk Langholm Moor

**Saturday 03/05/14, 09:00-15:00**

Langholm Moor, DG13, NY3986

Join Project Manager Cat Barlow on a walk around  
Langholm Moor. Contact: Cat Barlow 013873 80914

[cat@langholminitiative.co.uk](mailto:cat@langholminitiative.co.uk)

[www.langholm Moorland.co.uk](http://www.langholm Moorland.co.uk)

Booking essential. Suitable for all ages

## Forest Fun for Dads and Kids

**Saturday 03/05/14 10:30-12:30**

The Café, Kिरroughtree Visitor Centre, Stronord.

Head out into the forest to go pond dipping,  
searching for the secret wildlife living underneath  
the water. See 05/04/14 for details.



## Signs of Spring at Caldons

**Saturday 03/05/14, 09:30-12:00**

Caldons Wood, DG8 6SU, NX397791

Discover a woodland waking up to Spring on this guided walk.

Contact: Linda or Pete on 01671 401423

[enquiries@cvcwt.org.uk](mailto:enquiries@cvcwt.org.uk)

[www.cvcwt.org.uk](http://www.cvcwt.org.uk)

Booking essential. Suitable for all ages

## Caerlaverock NNR Nature Trail

**Saturday 03/05/14, 11:30-14:00**

Hollands Farm Car Park, Caerlaverock, DG1 4RS, NY041658

Come explore the exciting nature of Caerlaverock up close! Discover more about birds, insects and plants that live on this spectacular site. SNH staff will be on hand to help.

Contact: 01387 272440 or

[southern\\_scotland@snh.gov.uk](mailto:southern_scotland@snh.gov.uk)

Booking essential, by 4pm on Friday 2nd May.

Suitable for all ages

## In Focus

**Sunday 04/05/14, 10:00 to 16:00**

WWT Caerlaverock, DG1 4RS, NY052657

Try before you buy the latest binoculars and telescopes from the huge range available today. In Focus experts on hand all day to give advice.

Contact: 01387 770200

[info.caerlaverock@wwt.org.uk](mailto:info.caerlaverock@wwt.org.uk)

[www.wwt.org.uk](http://www.wwt.org.uk)

Booking not essential. Suitable for all ages

Normal admission charges, WWT members free.

## Mersehead Mystery Tour

**Monday 05/05/14, 11:00-16:00**

RSPB Mersehead, Southwick, Dumfries, DG2 8AH, NX925561

Join us for a mystery tour on reserve. Solve puzzles and complete challenges to find the treasure.

Contact: 01387 780579

[mersehead@rspb.org.uk](mailto:mersehead@rspb.org.uk)

[www.rspb.org.uk/mersehead](http://www.rspb.org.uk/mersehead)

Booking essential. Suitable for all ages

Adult £5, Child £3, Adult RSPB Member £3, WEX

Member £1.50

## Bug Explorers

**Monday 05/05/14, 14:00-16:00**

Wigtown Bay Visitor Centre, County Buildings, Wigtown, DG8 9JH, NX435553

Do you know bugs from bees? Discover the world of invertebrates in this bug hunt around Wigtown.

Contact: 01988 402130

[crookofbaldoon@rspb.org.uk](mailto:crookofbaldoon@rspb.org.uk)

[www.rspb.org.uk/crookofbaldoon](http://www.rspb.org.uk/crookofbaldoon)

Booking not essential. Suitable for all ages

Family £5, RSPB member £3

## Photographs courtesy of:

Keith Kirk -

[www.dumfriesandgallowaynaturalhistory.co.uk](http://www.dumfriesandgallowaynaturalhistory.co.uk)

RSPB Mersehead, John Bridges -

[www.rspb-images.com](http://www.rspb-images.com)

Peter Norman





# wild springfestival

Dumfries and Galloway

## Find out more:-

On wildlife in Dumfries & Galloway check out the following publications and websites:

### Birdwatching in D&G :

Available from Tourist Information Centres or [rangers@dumgal.gov.uk](mailto:rangers@dumgal.gov.uk) or download at [www.dumgal.gov.uk/rangers](http://www.dumgal.gov.uk/rangers)

Other publications on local wildlife, including butterflies, trees and Solway Coast, as well as advice on wildlife recording can be downloaded from the Dumfries & Galloway Environmental Resources Centre website at

[www.dgerc.org.uk?q=downloads](http://www.dgerc.org.uk?q=downloads)

Wildlife events take place throughout the year in Dumfries & Galloway, to find out more visit

[www.wildseasons.co.uk](http://www.wildseasons.co.uk)

Dumfries & Galloway is an inspiring place to enjoy wildlife, please enjoy the outdoors responsibly for more information visit

[www.outdooraccess-scotland.com](http://www.outdooraccess-scotland.com)

Like Wild Seasons in Dumfries & Galloway on

 [www.facebook.com/wildseasonsDG](http://www.facebook.com/wildseasonsDG)

 [twitter.com/WildSeasonsDG](https://twitter.com/WildSeasonsDG)

 [www.pinterest.com/wildseasons](http://www.pinterest.com/wildseasons)



weasleckt design

[www.wildseasons.co.uk](http://www.wildseasons.co.uk)